



Simplify Your Business & Grow Together

Dahua COS Cloud Platform: Confluence, Opportunity, Service



Device Health Management



Visualized Data and Tasks



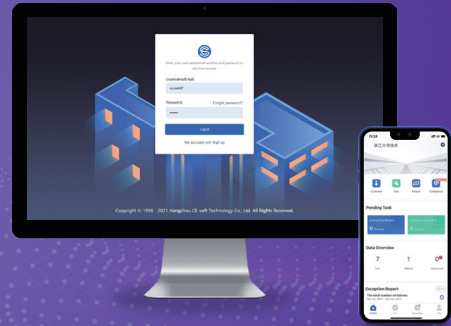
Company Management



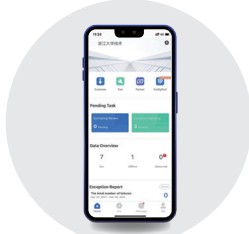
Remote Maintenance

| What is COS Cloud Platform?

The brand new COS Cloud Platform offers a confluent, cloud-based service system that allows you to manage on-site devices and enjoy a full range of services. It's a simple and reliable platform where you can manage your customers' sites anytime, anywhere. When a device fails, you'll receive a push notification immediately, allowing you to locate the issue and solve it remotely.



- Easy to use interface
- Visualized dashboard
- Error pop-up notification for malfunctioning devices
- Work task notifications
- Simple and clear troubleshooting process
- Multi-dimensional reports



- One-stop management of sites and devices
- Device configuration in batches
- Receive error notification anytime, anywhere
- Better interaction with your customers
- Real-time notification



Allows business expansion to increase revenue



Offers simple process and convenient operation



Saves time and improves efficiency



Provides brand cooperation and flexible interaction to enhance customer loyalty



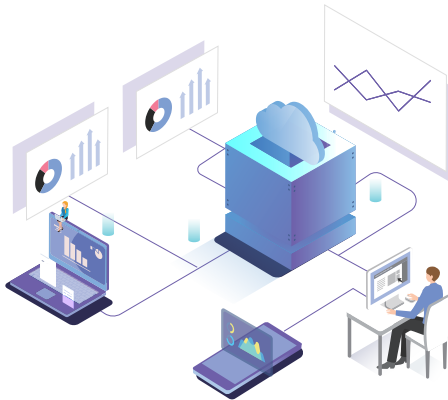
| COS Features

Device Health Management

• When you are hosting your customer's sites, you can provide them with device health management service remotely. If a device fails, you will immediately receive an error notification. The system will also automatically help you locate the issue and provide possible solutions. You can solve most of the fault problems remotely, thus greatly saving your time and money.

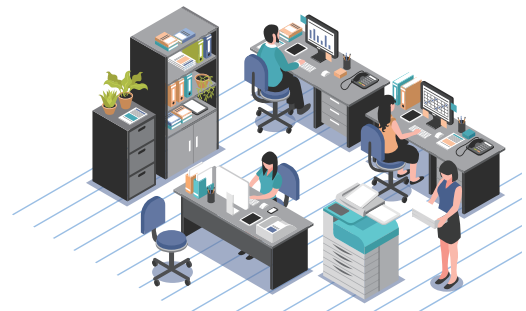


- Device health management has never been this simple and convenient. When a device malfunction, you'll get a task on your dashboard and mobile app. The platform will guide you to solve the issue step by step.



Company Management

You can manage your company, employee and customer information directly on the web portal. For example, you can assign tasks to your employees based on their work situation, and view your customers' evaluations about their services. It allows you to better understand your staff's professional skills, improve your customer loyalty and grow your team.



Reduced Installation and Configuration Time

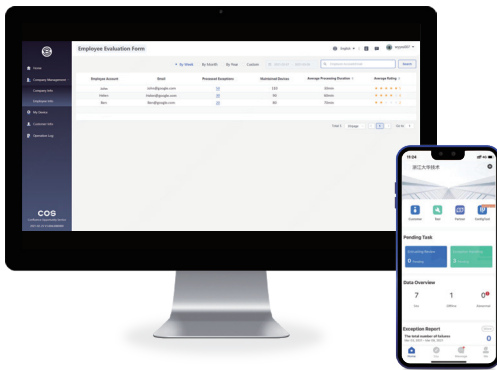
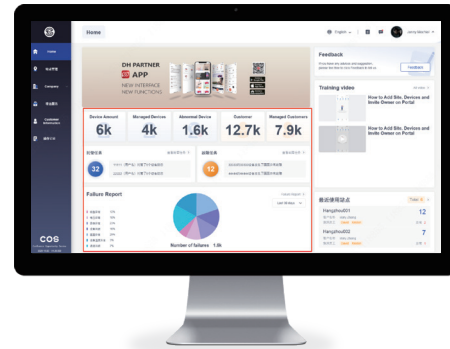
- The COS Pro APP allows you to do on-site installation without always bringing a laptop with you.
- You can log in to the device's web page to do all of the configuration remotely through COS Pro web portal.
- Various devices can be added in the platform and you can add or configure them by batch.



Highlights

Visualized Data and Tasks

The error reports, customer reports and employee reports on the dashboard can help you simplify your workflow and improve your work efficiency.

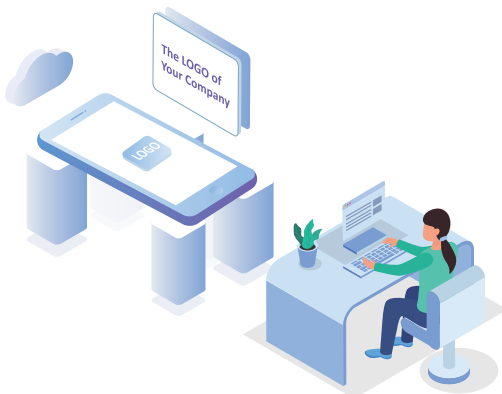
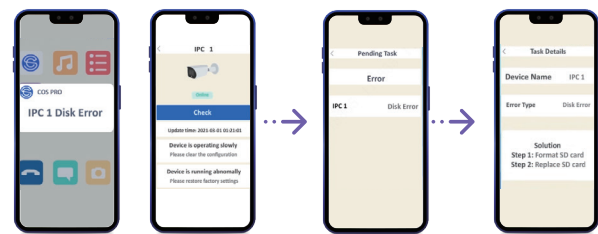


Convenient Management

- Provides intuitive web portal and application, enabling you to conveniently manage customers, employees and sites.
- You can assign tasks to your employees based on their work situation, and view your customers' evaluations of their services, allowing you to better understand your staff's professional skills, improve your customer loyalty and grow your team.
- Multiple sites can be managed in an efficient and easy manner.

Remote Maintenance

- Simplifies the process of device configuration, operation and maintenance, thus saving time and costs.
- When a device error occurs, you'll get a task on your dashboard and mobile app. The platform will provide guidance to solve the issue step by step.

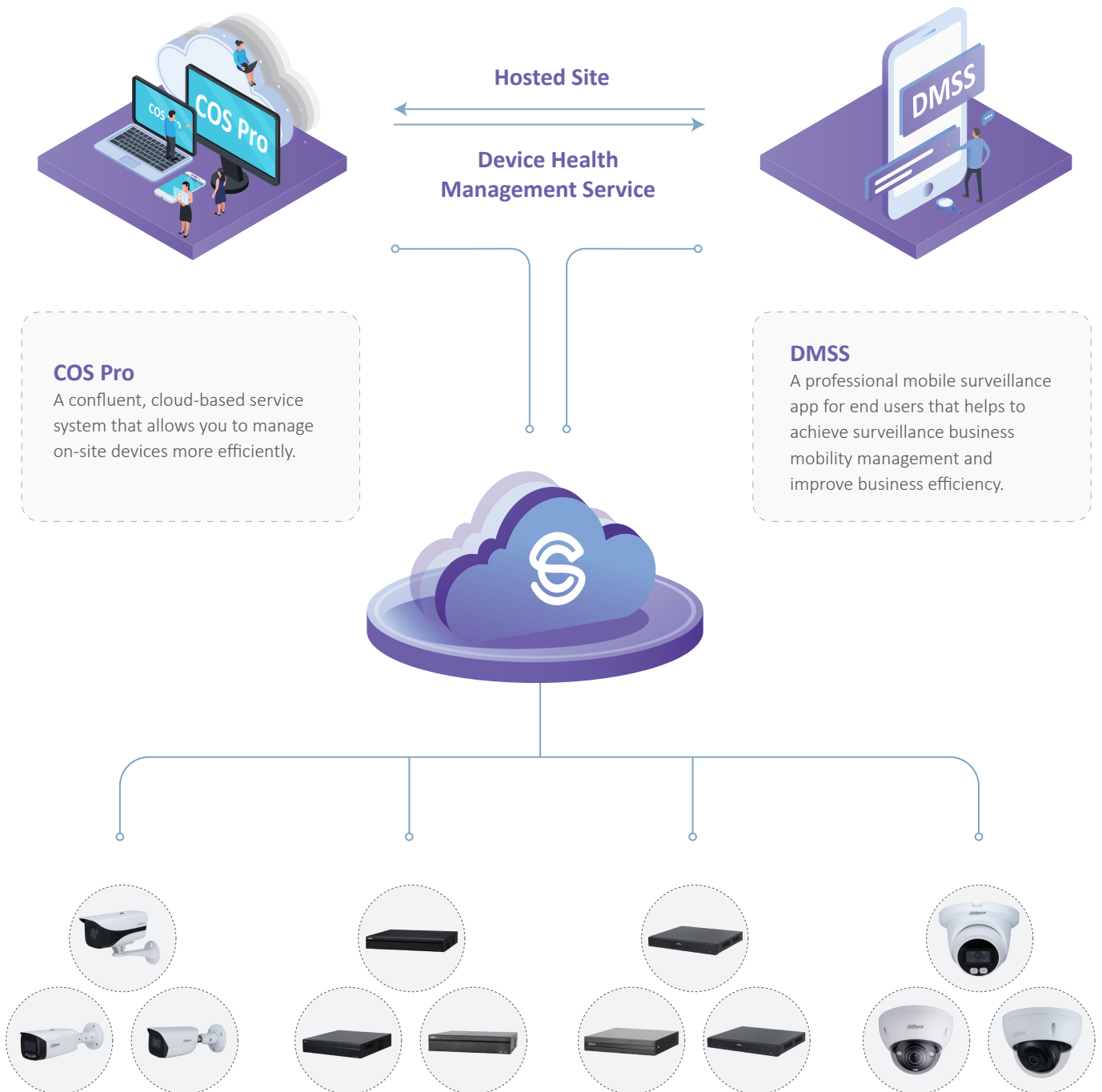


Co-branding

We will provide you with co-branding services. When your customer opens the DMSS app, your company logo and introduction will be displayed on the screen, which can help increase your company's brand awareness.



| How Does It Work?





| Technical Advantages

COS utilizes strong cloud support and has many advantages that allow you to use it without worry:

- Device access is unlimited, which can help you to easily manage the growth of your business.
- All data can be updated anytime and anywhere.
- You can minimize the upfront fee with its budget-friendly payment mode.



| Guaranteed Security and Reliability

- Based on the infrastructure developed by the world's leading cloud computing vendor (AWS).
- Strictly follows the industry's top standards and protocols.
- High privacy protection standards.



ITSS[®]



* Design and specifications are subject to change without notice.

Ver. 1, Mar. 2021

DAHUA TECHNOLOGY

No.1199 Bin'an Road, Binjiang District, Hangzhou, China. 310053

Tel: +86-571-87688883 Fax: +86-571-87688815

Email: overseas@dahuatech.com

www.dahuasecurity.com

